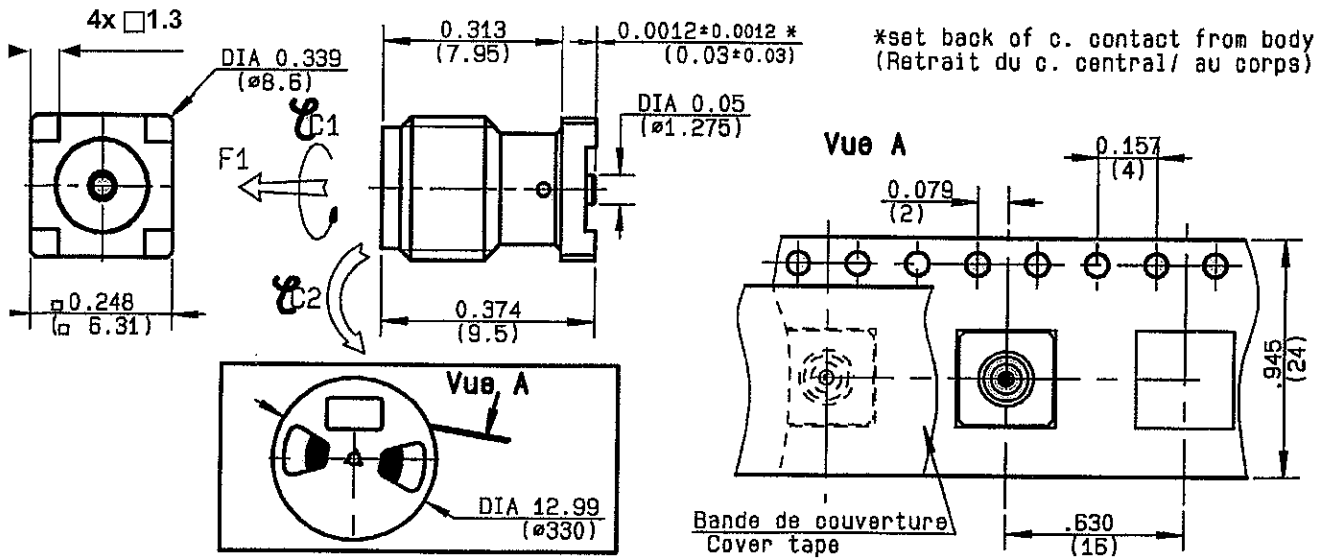


STRAIGHT JACK RECEPTACLE FOR PCB

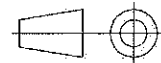
R124.427.800

SMT TYPE - REEL OF 100

Series : SMA-COM



All dimensions are in mm.



| COMPONENTS | MATERIALS | PLATINGS (µm) |
|----------------|------------------|------------------------|
| BODY | BRASS | GOLD 0.2 OVER NICKEL 2 |
| CENTER CONTACT | BERYLLIUM COPPER | GOLD 0.5 OVER NICKEL 2 |
| OUTER CONTACT | - | - |
| INSULATOR | PTFE | - |
| GASKET | - | - |
| OTHERS PARTS | - | - |
| - | - | - |
| - | - | - |

Issue : 0606 C

In the effort to improve our products, we reserve the right to make changes judged to be necessary.



STRAIGHT JACK RECEPTACLE FOR PCB

R124.427.800

SMT TYPE - REEL OF 100

Series : SMA-COM

PACKAGING

| Standard | Unit | Other |
|----------|------------|------------|
| 100 | 'W' option | Contact us |

SPECIFICATION

ELECTRICAL CHARACTERISTICS

ENVIRONMENTAL

| | | |
|---------------------------------|--------|-----------------------|
| Impedance | | 50 Ω |
| Frequency | | 0-18 GHz |
| VSWR | 1.04 + | 0,0450 x F(GHz) Maxi |
| Insertion loss | | 0.05 √F(GHz) dB Maxi |
| RF leakage | - (| 100 - F(GHz)) dB Maxi |
| Voltage rating | | 500 Veff Maxi |
| Dielectric withstanding voltage | | 1000 Veff mini |
| Insulation resistance | | 5000 MΩ mini |

| | |
|-----------------------|--------------|
| Operating temperature | -65/+165 °C |
| Hermetic seal | NA Atm.cm3/s |
| Panel leakage | NA |

OTHERS CHARACTERISTICS

Assembly instruction

Others :

FORCE F1:100N-TORQUES C1:70Ncm-C2:90Ncm

MECHANICAL CHARACTERISTICS

| | | |
|----------------------------|----|-----------|
| Center contact retention | | |
| Axial force – Mating end | 15 | N mini |
| Axial force – Opposite end | 15 | N mini |
| Torque | 1 | N.cm mini |

| | | |
|--------------------|----|------|
| Recommended torque | | |
| Mating | 40 | N.cm |
| Panel nut | NA | N.cm |

| | | |
|-------------|----------|-------------|
| Mating life | 100 | Cycles mini |
| Weight | 364,1500 | g |

Issue : 0606 C

In the effort to improve our products, we reserve the right to make changes judged to be necessary.



RADIALL®

STRAIGHT JACK RECEPTACLE FOR PCB

R124.427.800

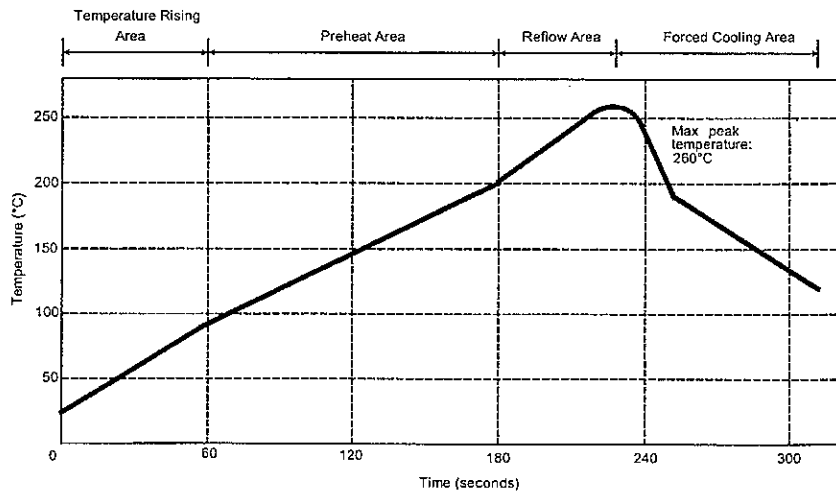
SMT TYPE - REEL OF 100

Series : SMA-COM

SOLDER PROCEDURE

1. Deposition of solder paste 'Sn Ag4 Cu0.5' on mounting zone by screen printing application. We recommend a low residue flux.
We advise a thickness of 150 microns mini (.006 inch). Verify that the edges of the zone are clean.
2. Placement of the receptacle on the mounting zone with an automatic machine of 'pick and place' type. Aspiration port centered into body and push against it.
Video camera is recommended for the positioning of the component. Adhesive agents must not be used on the receptacle.
3. Soldering by infra-red reflow.
Below, please find the typical profile to use.
4. Cleaning of printed circuit boards.
5. Checking of solder joints and position of the component by visual inspection.

TEMPERATURE PROFILE



| Parameter | Value | Unit |
|----------------------------------|-----------|--------|
| Temperature rising Area | 1 - 4 | °C/sec |
| Max Peak Temperature | 260 | °C |
| Max dwell time @260°C | 10 | sec |
| Min dwell time @235°C | 20 | sec |
| Max dwell time @235°C | 60 | sec |
| Temperature drop in cooling Area | -1 to - 4 | °C/sec |
| Max dwell time above 100°C | 420 | sec |

Issue : 0606 C

In the effort to improve our products, we reserve the right to make changes judged to be necessary.



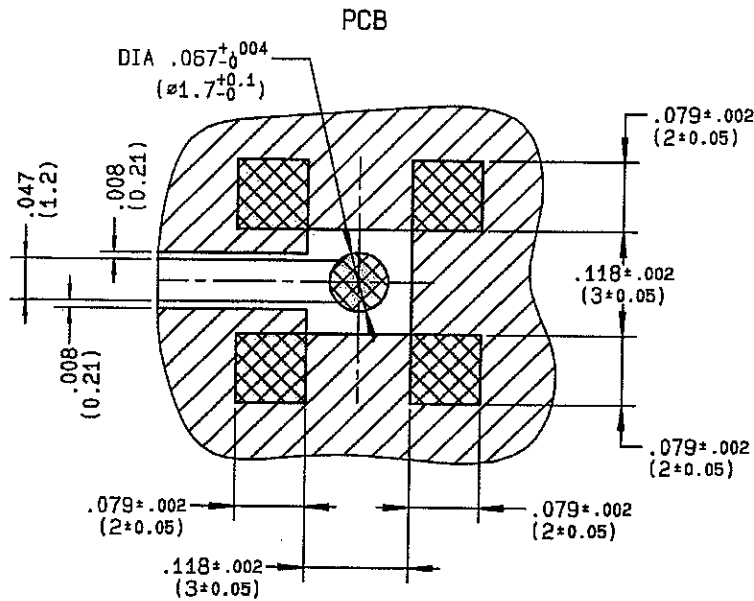
STRAIGHT JACK RECEPTACLE FOR PCB

R124.427.800

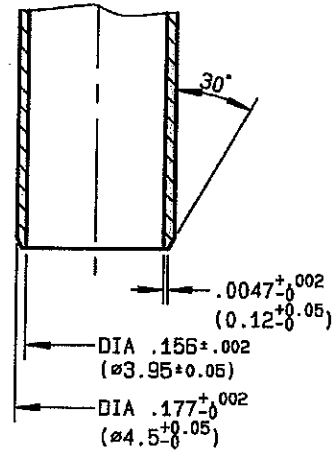
SMT TYPE - REEL OF 100

Series : SMA-COM

SMA B SERIES - INFORMATIONS



ASPIRATION PORT



COPLANAR LINE

Pattern and signal are on the same side
 Thickness of PCB : .063 (1.6 mm)
 The material of PCB is the epoxy resin
 of glass fabrics bacs. (Er = 4.8)
 The solder resist should be printed
 except for the land pattern on the PCB.

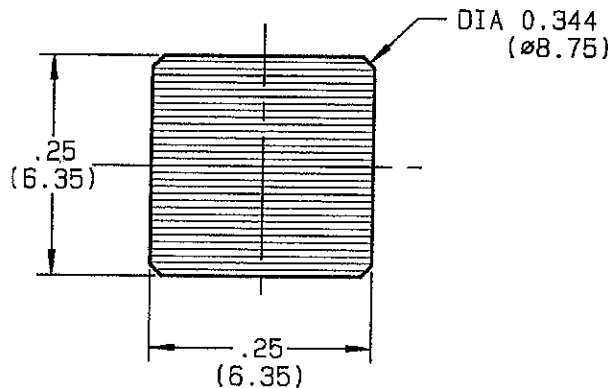


Pattern



Land for solder paste

**SHADOW OF "SMA B" RECEPTACLE
 FOR VIDEO CAMERA**



Issue : 0606 C

In the effort to improve our products, we reserve the right to make changes judged to be necessary.



RADIALL®